



SHOWING EXTRAVAGANZA

SATURDAY 13TH AUGUST -
SUNDAY 14TH AUGUST



SATURDAY 13TH AUGUST

RING 1: START TIME 10AM

Section 1: Pony In-Hand Classes

- Class 1 - Mountain & Moorland Best Turned Out
- Class 2 - Small Mountain & Moorland 4 years and over
- Class 3 - Large Mountain & Moorland 4 years and over
- Class 4 - Small Mountain & Moorland 3 years and under
- Class 5 - Large Mountain & Moorland 3 years and under
- Class 6 - Plaited Ponies Best Turned Out
- Class 7 - Show Hunter/Riding Ponies 4 years and over
- Class 8 - Show Hunter/Riding Ponies 3 years and under
- Class 9 - Part Bred Mountain & Moorland any age under 14.2hh
- Class 10 - Coloureds including spotted any age under 14.2hh
- Class 11 - Arab, Anglo and Part Bred any age under 14.2hh
- Class 12 - Veteran Pony over 20yrs under 14.2hh

Judge: K. MACKAY



SPONSERED BY: SQUEEGEE CLEAN WINDOWS

Section 2: Pony Ridden Classes

- Class 13 - Best Turned Out Under Saddle
- Class 14 - Novice Ridden - Snaffle only. No group canter. Ponies not to have won an open ridden class
- Class 15 - Small Mountain & Moorland
- Class 16 - Large Mountain & Moorland
- Class 17 - Show Hunter/Riding Pony
- Class 18 - Part Bred Mountain & Moorland under 14.2hh
- Class 19 - Coloureds including spotted any age under 14.2hh
- Class 20 - Arab, Anglo & Part Bred under 14.2hh
- Class 21 - Lead Rein Pony - Child to be under 12years as at 1st Jan 2022
- Class 22 - 1st Ridden Pony - Child to be under 12years as at 1st Jan 2022
- Class 23 - Veteran Pony over 20yrs under 14.2hh
- Class 24 - Riding Club Pony (Optional Jump)

Judge: K. MACKAY



SPONSERED BY: SQUEEGEE CLEAN WINDOWS

**Section 3 (Not to start before 1pm):
Miscellaneous**

Judge: S. Cork

- Class 25 - Best mane and tail
- Class 26 - Cutest Face
- Class 27 - Prettiest Mare
- Class 28 - Handsomest Gelding
- Class 29 - Child Handler 12 years and under
- Class 30 - Child Handler 16 years and under
- Class 31 - Pony Judge Would Most Like to Take Home
- Class 32 - Fancy Dress



SPONSERED BY: ADAPTIVE SURVEYS

RING 2: START TIME 10AM

**Section 4:
Pony Working Hunter**

Judge: S. CRUICKSHANK

- Class 33 - Cross-poles (can be lead rein/assisted)
- Class 34 - 40cm
- Class 35 - 50cm
- Class 36 - 60cm
- Class 37 - 70cm
- Class 38 - 80cm



SPONSERED BY: GREG LEES JOINERY SERVICES

SUNDAY 14TH AUGUST

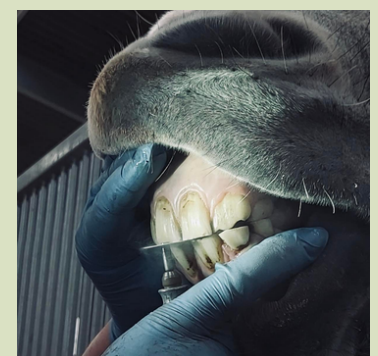


RING 1: START TIME 10AM

**Section 5:
Horse In-Hand Classes**

Judge: C. ROBERTSON MCGHEE

- Class 39 - Best Turned Out - all breeds
- Class 40 - Hunters 3 years and under
- Class 41 - Hunters 4 years and over
- Class 42 - Riding Horse/Show Hack 3 years and under
- Class 43 - Riding Horse/Show Hack 4 years and over
- Class 44 - Part Bred Mountain & Moorland over 14.2hh
- Class 45 - Arab, Anglo & Part Bred - any age over 14.2hh
- Class 46 - Coloureds Including Spotted - any age over 14.2hh
- Class 47 - Veteran Horse - over 20years
- Class 48 - Foreign Breeds - any age
- Class 49 - Warmbloods and Sport Horses - any age
- Class 50 - Cobs - Show and Traditional - any age
- Class 51 - Heavy Horse - Full of Part Bred



SPONSERED BY: CHOMPING AT THE BIT - DEBORAH ATKINSON CERTIFIED EDT

**Section 6:
Horse Ridden Classes**

Judge: C. ROBERTSON MCGHEE

- Class 52 - Best Turned Out – All breeds over 14.2hh
- Class 53 - Novice Ridden - Snaffle only. No group canter. Horses not to have won an open ridden class
- Class 54 - Small Hunter 14.2hh-15.2hh
- Class 55 - Large Hunter over 15.2hh
- Class 56 - Riding Horse/Show Hack
- Class 57 - Part Bred Mountain & Moorland over 14.2hh
- Class 58 - Arab, Anglo and Part Bred over 14.2hh
- Class 59 - Coloureds Including Spotted over 14.2hh
- Class 60 - Veteran Horse – over 20years
- Class 61 - Foreign Breeds
- Class 62 - Warmbloods and Sport Horses
- Class 63 - Cobs – Show and Traditional
- Class 64 - Heavy Horse - Full of Part Bred
- Class 65 - Riding Club Horse (Optional Jump)



SPONSERED BY: RIVERSIDE CHIROPRACTIC GROUP



RING 2: START TIME 10AM

**Section 7:
Horse Working Hunter**

Judge: L. CAMPBELL

- Class 66 - Cross-poles (can be assisted)
- Class 67 - 50cm
- Class 68 - 60cm
- Class 69 - 70cm
- Class 70 - 80cm
- Class 71 - 90cm
- Class 72 - 1m

SPONSERED BY: THERAPY BARN

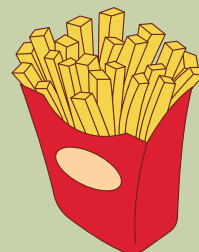
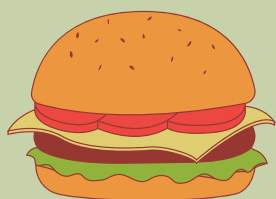


At end of each section all 1st and 2nds to return for section championship!



Show Info and Rules:

- Please remember the Judge's decision is final.
- Judges and Classes may be subject to change at the Organiser's discretion.
- You must enter the correct arena at the start of the class – if entering multiple classes, the organisers cannot be held responsible if classes clash.
- Objections shall be made in writing within 30 minutes of the event concerned and lodged with the Secretary together with the sum of £50, which will be refunded if the objection is upheld.
- All riders/exhibitors should be safely and smartly dressed. • Hats must conform to EN1384 or above and must be correctly fastened and worn by competitors at all times whilst mounted.
- Competitors under 16 years old must wear a current standard riding hat, correctly fastened at all times while showing in hand.
- Horses and Ponies are easily spooked and can be dangerous, please avoid behaviour which might alarm them!



ENTER IN ADVANCE AT
WWW.EQUOEVENTS.CO.UK
ENTRIES ON DAY TAKEN AT £3 EXTRA
PER CLASS

